



www.SevenForums.com

Register | Today's Posts | Tutorials | Vista Forum | Windows 8 Forum | Search

User Name   Remember Me? Password

Welcome to **Windows 7 Forums**. Our forum is dedicated to helping you find solutions with any problems, errors or issue you are experiencing with **Windows 7**. The site also covers news and updates and has an extensive **Windows 7 tutorial** section that covers a wide range of tips and tricks.

Windows 7 Forums > Windows 7 help and support > Tutorials »

## Windows 7 - AHCI : Enable in Windows 7 / Vista

Page 1 of 51 1 2 3 11 > Last »



### AHCI : Enable in Windows 7 / Vista

Published by **Bare Foot Kid**  
07 Feb 2010

## AHCI : Enable in Windows 7 after OS install

AHCI **Advanced Host Controller Interface** makes NCQ **Native Command Queing** along with hot-plugging or hot swapping through SATA Serial-ATA host controllers possible; Vista was the first to offer this feature. The issue with AHCI is it needs to be enabled in the BIOS prior to OS installation; doing so after you have installed the OS will disable the PC. The reason why is Windows disables the AHCI drivers not needed during installation.

This tutorial will show you how to enable AHCI **after** you have installed the OS if you didn't already have AHCI enable in the BIOS when you installed the OS.

#### **Warning**

Changing values in the Windows registry can disable your machine; if you're not sure how to do this please post a question in this tutorial and someone will be glad to help you.

#### **Information**

This method will also work for Windows Vista though the default DWORD string value in Vista will be "4" where it will be "3" in Windows 7.

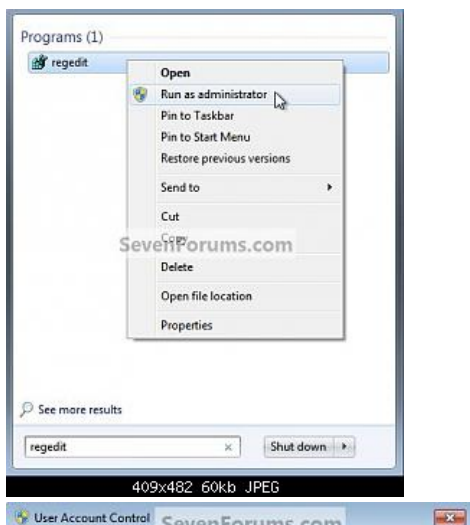
#### **Note**

As a precaution it would be a good idea to create a "System Restore Point" before you start this, the tutorial can be found at the link below.

[System Restore Point - Create](#)

### Let's get started!

- 1) In the Windows start menu search box type "regedit" (without the quotes) then right click the entry and click "Run as Administrator" then enter your user credentials for the UAC prompt then click yes to open regedit.

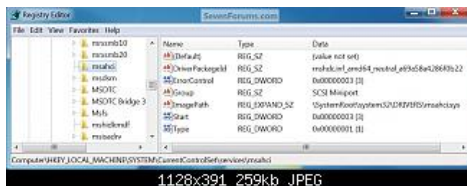


Published by **Bare Foot Kid**  
 Microsoft Most Valuable Professional

Tutorial Tools



- 2) In regedit navigate to HKEY\_LOCAL\_MACHINE\SYSTEM\CurrentControlSet\services, in the left pane click "msahci", in the right pane right click "start" then click "modify" ...

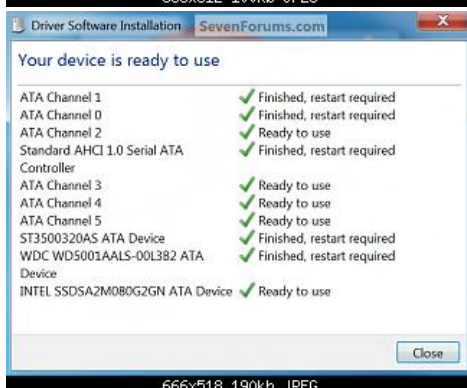
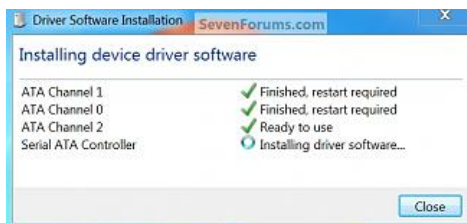


- 3) In the window that opens change the value to "0" and click OK.

To close regedit click "File" at the top left and click "Exit".



- 4) Now you'll need to restart the PC and go into the BIOS and enable AHCI; when Windows boots up it will finish installing the AHCI drivers.



5) You will need one final restart to finish the process after the drivers are installed.



**Note**

For those with nForce boards, have a look at the **Information** post below.  
 The method was worked out by [Everlong](#) and credit for that goes to him, thanks mate!

Enjoy! 😊

**Related Tutorials**

- [How to Enable HIPM and DIPM for your SSD and HDD in Windows 7](#)

Reply

07 Feb 2010

#1

**Bare Foot Kid**

W 7 64-bit Ultimate  
[24,316 posts](#)  
 The Lowcountry

**Information**

For those with nForce boards, this method was worked out by [Everlong](#) and credit for that goes to him, thanks mate!

Just to put in here for nForce users, nForce boards do not support AHCI (with the exception of nForce boards that include onboard graphic cards), and also don't send the TRIM command for SSDs. It can do NCQ through its controller though. The JMicron SATA ports do support AHCI, but you'd get worse performance running a HDD through these, than on the normal SATA ports.

You can uninstall the Nvidia controller though in Device Manager and install Microsoft's IDE Controller, which can send TRIM commands for SSDs.

Head to Device Manager (Open Start menu, type Device Manager), and click "IDE ATA/ATAPI Controllers", and you will see 3 Nvidia Serial ATA Controllers. Right click one of them and click "Properties" and go to the "Driver" tab. Click "Update Driver". Click "Browse my Computer", and then "Let me pick". You will see the option to choose "Standard Dual Channel PCI IDE Controller". Click this and click "Next" and let it install.

Do the same for the other two Nvidia Controllers in Device Manager and restart your system. After the controllers have installed, you will be asked to reboot again.

SSDs will now have a slight performance boost with the TRIM command, and also regular HDDs also have a slight increase as well.

My System Specs ▾

07 Feb 2010

#2

**beuparc**

Windows 7 64 bit  
[185 posts](#)  
 Anglesey

Nice tutorial. Rep upped. 😊

Just one quick question - are there any general performance hits or gains from this?

My System Specs ▾

07 Feb 2010

#3

**garysgold**

Nice tutorial Ted. 🙌 😊

Vista Ult 64 bit  
Seven Ult RTM x64  
[3,194 posts](#)  
Maine, USA



My System Specs ▾

07 Feb 2010

#4

## swarfega

Any chance of losing data by enabling this?

Windows 7  
Professional 64-bit  
[5,130 posts](#)

My System Specs ▾

07 Feb 2010

#5

## Bare Foot Kid

Hello y'all, thanks!

W 7 64-bit Ultimate  
[24,316 posts](#)  
The Lowcountry

I haven't had time to run any benches, I'd be real interested in seeing some real time comparisons myself; but it brought the WEI for my Intel 80GB X25M G2 from 7.5 to 7.8.

@swarfega, I had no problems in the 2 Windows 7 and 1 Vista I've done it in but "backup" is the word of the day.

My System Specs ▾

07 Feb 2010

#6

## Dwarf

Excellent Tutorial, Ted. +Rep. 😊

Windows 7 Ultimate  
x64 Service Pack 1  
[10,260 posts](#)  
Doncaster, UK

My System Specs ▾

07 Feb 2010

#7

## swarfega

Step 3 is not too clear since your talking about pressing r in right pane and dont mention which entry that is since its covered by the menu. I assume you mean "Start" but in my case its already set at 0 since I enabled AHCI in bios so I assume I dont need this?

Windows 7  
Professional 64-bit  
[5,130 posts](#)

My System Specs ▾

07 Feb 2010

#8

## Bare Foot Kid

**Quote: Originally Posted by swarfega** ♦  
*Step 3 is not too clear since your talking about pressing r in right pane and dont mention which entry that is since its covered by the menu. I assume you mean "Start" but in my case its already set at 0 since I enabled AHCI in bios so I assume I dont need this?*

W 7 64-bit Ultimate  
[24,316 posts](#)  
The Lowcountry

Hello Nick.

It says above to "In regedit navigate to HKEY\_LOCAL\_MACHINE\SYSTEM\CurrentControlSet\services, click msahci, in the right pane **r. click "start" then click "modify" ...**

Did you enable AHCI in the BIOS before you installed the OS?

My System Specs ▾

07 Feb 2010

#9

## swarfega

Yes I enabled it before current format.

Windows 7  
Professional 64-bit  
5,130 posts

My System Specs ▾

Page 1 of 51 **1** 2 3 11 > Last »

Post Reply

## AHCI : Enable in Windows 7 / Vista problems?

« [Firefox - Start Firefox in "Safe Mode"](#) | [System Info - See Your System Specs](#) »

### Similar Threads for: AHCI : Enable in Windows 7 / Vista

	Windows 7 Tutorial	Category
<a href="#">How to Enable AHCI - No option in BIOS.</a>		Hardware & Devices
<a href="#">enable AHCI in Windows 7</a>		Hardware & Devices
<a href="#">Windows 7...&gt;SSD....Enable AHCI B4 Installation</a>		Installation & Setup
<a href="#">Enable and/or Disable AHCI</a>		Hardware & Devices
<a href="#">AHCI to Enable or Not?</a>		Performance & Maintenance

All times are GMT -5. The time now is 09:39 AM.

[Windows 8 Forums](#) - - [Contact Us](#) - [Windows 7 Forums](#) - [Legal](#) - [Privacy and cookies](#) - [Top](#)



Windows 7 Forums is an independent web site and has not been authorized, sponsored, or otherwise approved by Microsoft Corporation.  
 "Windows 7" and related materials are trademarks of Microsoft Corp.  
 © Designer Media Ltd

1 2 3 4 5 6 7 8 9 10 11 12 13 14 15 16 17 18 19 20 21 22 23 24 25 26 27 28 29 30 31